

CERTIFICATE OF LOCATION OF GOVERNMENT CORNER

East quarter Corner of Section 17, Township 108, Range 42, 5th P.M.

STATE OF MINNESOTA, County of Murray

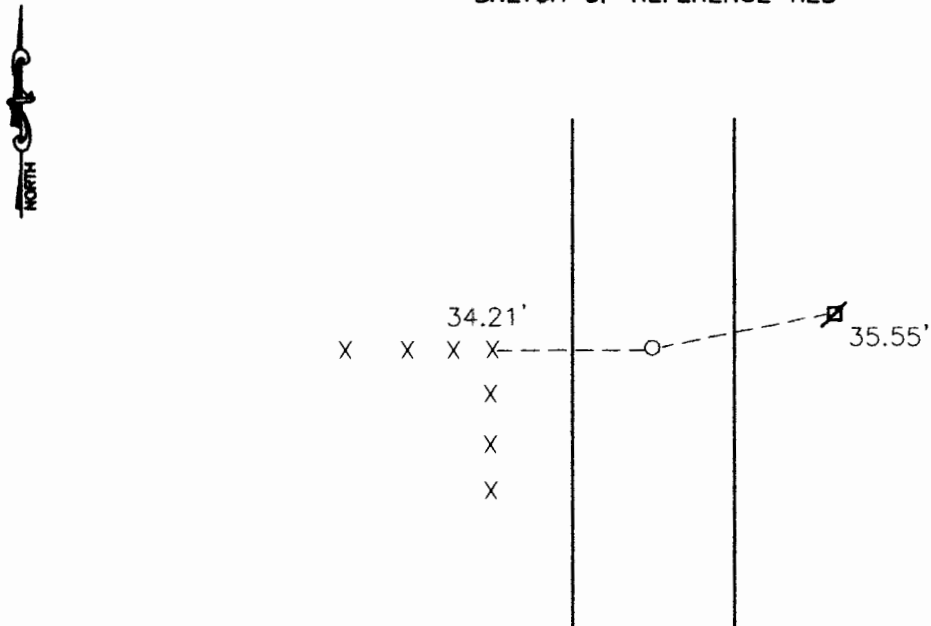
At the corner location shown on the sketch:

On 3-10-2000 found a spike over a 1"x1"x18" pointed wood stake
DATE

left monument as found, lowered monument, removed monument (explain)

On 3-10-2000 placed a 5/8" iron with a seal #11943 on South side of wood stake
DATE

SKETCH OF REFERENCE TIES



Nail and seal in power pole 35.55' East
Nail and seal in corner fence post 34.21' West

Statement of evidence relative to this corner location is on back of page.

I hereby certify that this document and the data contained herein was prepared by me or under my direct supervision.

Steve C. Mowery 12-29-00
SIGNATURE DATE

Registration No. 11943
 Land Surveyor, Professional Engineer
 County Surveyor, County Engineer

OFFICE OF THE COUNTY RECORDER

County of _____
I hereby certify that this document was filed in the Co. Recorders office at _____ .M on the _____ day of JUL 24 2001 A.D. 19 _____

County Recorder James V. Johnson
By _____, Deputy

DOCUMENT NO. _____

Statement of Evidence

On 3-10-2000, Moseng Land Surveying found a spike over a 1"x1"x18" pointed wood stake. We placed a 5/8" iron with a seal #11943 on the South side of the wood stake.